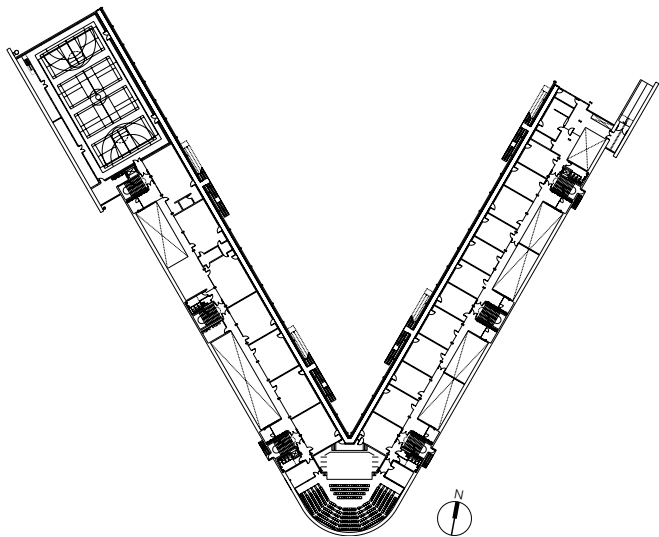


Mossbourne Community Academy, London



This project is all about putting pride back into a community. It is about ownership, equality and heart. It is about genuine approaches to sustainability through environmental design and material choices.

Place/Date
London, England 2002 – 2004

Client
Mossbourne Community Academy

Cost
£25 million

Area
8,312 m²

Cost/m²
£2,105

Architect
Richard Rogers Partnership

Structural Engineer
Whitby Bird & Partners

Services Engineer
BDSP Partnership

Quantity Surveyor
Davis Langdon & Everest

Project Manager
Osprey Mott MacDonald

Landscape Architect
Kinnear Landscape Architects

Main Contractor
MACE



RRP's design for the Mossbourne Community Academy replaces the former Hackney Downs School and will accommodate 1000 pupils aged 11-16, with a special focus on teaching information and communication technology, as well as offering learning facilities to the wider community.

It is a new sort of school for a new century, located in one of England's most deprived boroughs, and a powerful engine of regeneration in its own right – the architecture of the building expresses its significance and embodies key themes of accessibility, openness and social inclusion. The project is in tune with the aspirations of the Urban Task Force (chaired by Richard Rogers) and with ideas of urban renewal generated at grassroots level.

The triangular site for the Academy is confined and subject to high levels of noise from the busy railway tracks that enclose it on two sides – on the third side (to the north) it

looks out to Hackney Downs, one of the very few treasured green spaces in the borough. In response, the 8,312 sq.m., three-storey building – one of the largest timber frame buildings in the UK – is conceived as a broad "V", its back to the railway track, its focus the generous external space to the north.

Teaching spaces look out to a new landscaped square that is visually linked to the parkland beyond. The various faculties/bases for year groups are housed in sections of the building configured as 'terraced houses', with access from a broad covered 'cloister', with internal circulation via an intermediate zone. Each 'house' consists of a ground floor of common space, designated staff areas (there is no specific staff room in the school), with a top-lit IT resource space and two levels of more traditional classrooms looking out over the Downs.

Awards

Civic Trust Award
2006

RIBA Award
2005

Hackney Design Award
2004