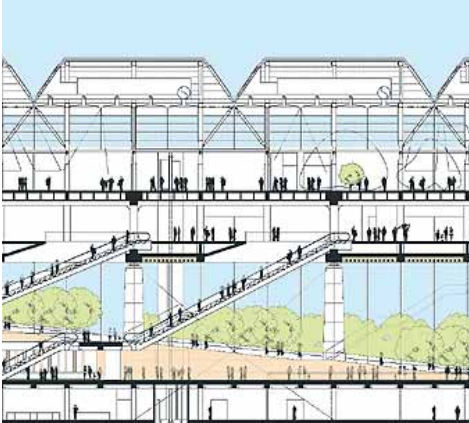


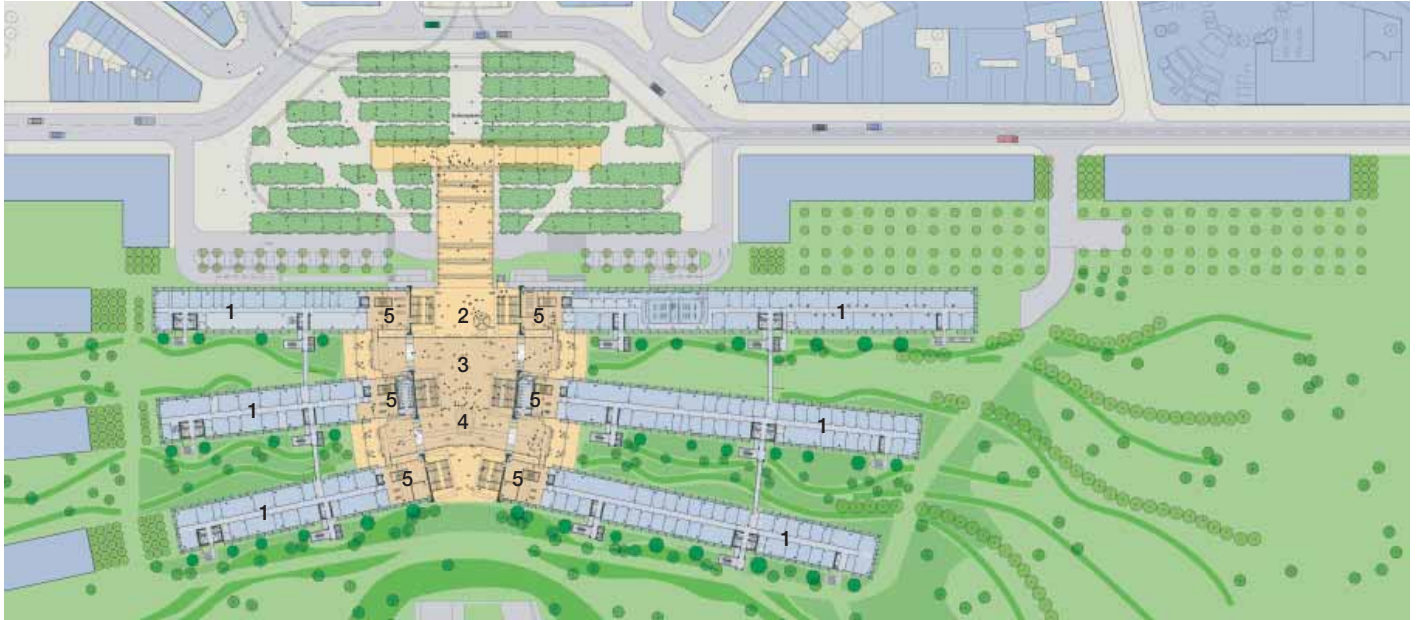
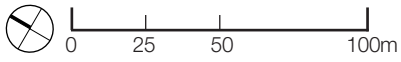
# Drawings & Models



# Plans

Image Number : 2850\_0155\_3 & 2850\_0156\_3

- |   |                              |    |                                    |
|---|------------------------------|----|------------------------------------|
| 1 | Offices                      | 7  | Courtroom - Mercantile Court       |
| 2 | Entrance                     | 8  | Courtroom - High Court<br>Criminal |
| 3 | Salle des Pas Perdus         | 9  | Courtroom - High Court Civil       |
| 4 | Main Reception / Information | 10 | Courtroom - Magistrates<br>Court   |
| 5 | Reception                    |    |                                    |
| 6 | Courtroom - Family Court     |    |                                    |



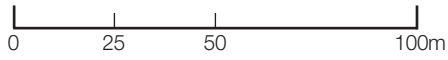
Salle des Pas Perdus level



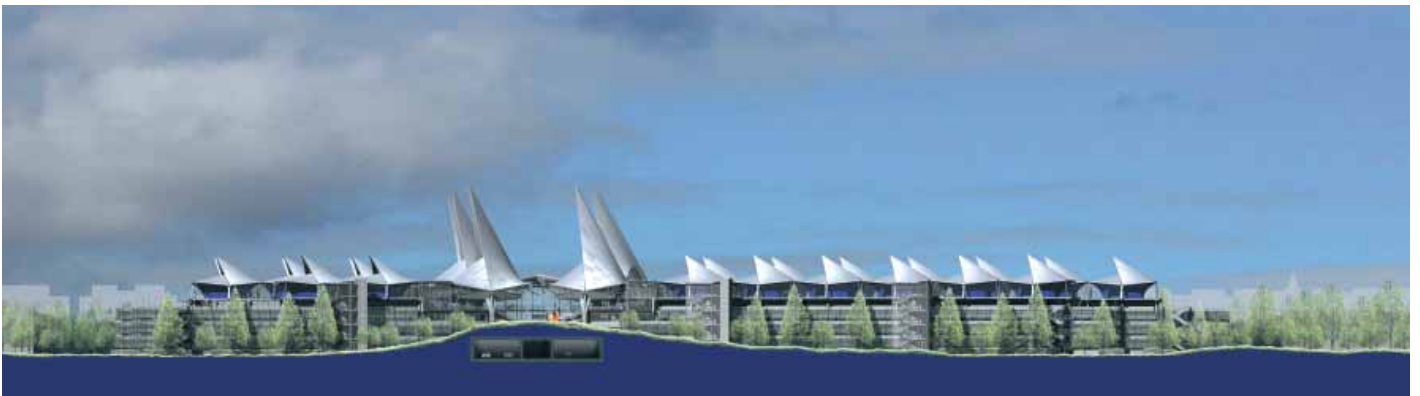
Courtroom level

# Elevations & Sections

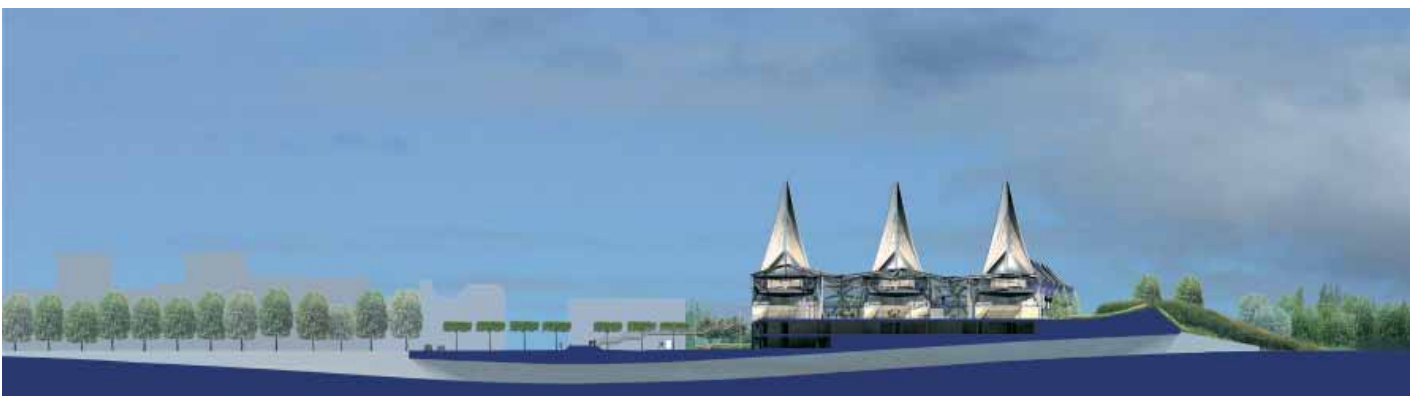
Image Number : 2850\_0153\_2, 2850\_0154\_2 & 2850\_0157\_2



Front elevation



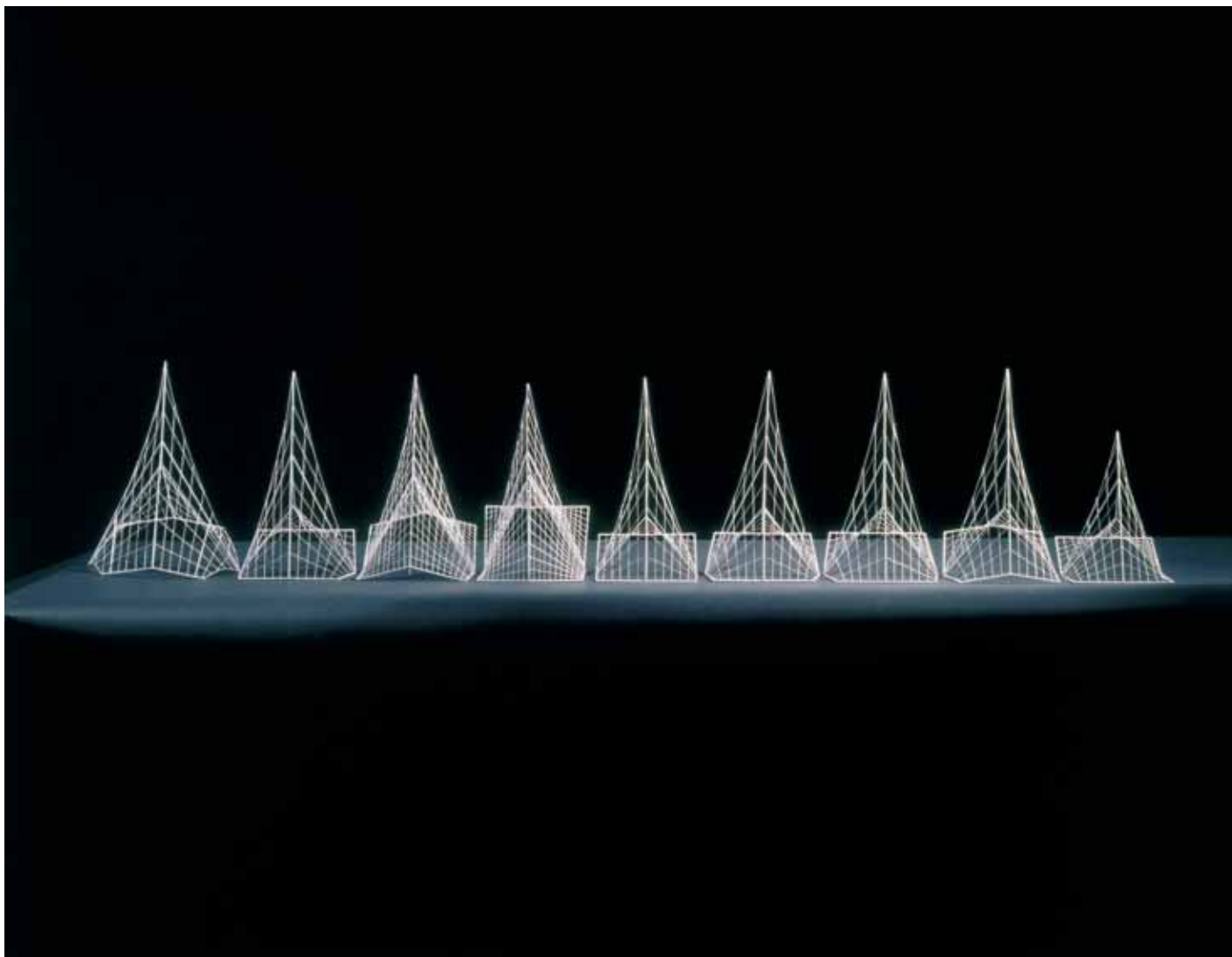
Rear elevation



Section through the Salle des Pas Perdus

# Development Models

Image Number : 2820\_0132\_1



Large court room roof structural studies,  
developing the hyperbolic paraboloid  
geometry used in the final design

# Sectional Model

Image Number : 2850\_0117\_1



**Antwerp Law Courts**  
Antwerp, Belgium 1998 - 2005

**Credit: RRP Modelshop / Eamonn O'Mahony**  
Copyright: Richard Rogers Partnership

Large court room study model